

REVISIONS	BY
MSUP SUBMITTAL 08-5-23	
PLAN CHECK SUBMITTAL 10-10-23	
PLAN CHECK CORRECTIONS 11-15-23	KHR

1024 ISABELLA AVENUE
CORONADO, CA 92118
(619) 522-9504

KEVIN RUGEE
ARCHITECT INC.
ESTABLISHED 1986



COPYRIGHT © 2025

MONTESSORI SCHOOL
SPECIAL USE PERMIT
1123 8TH STREET
CORONADO, CA 92118

DATE	03-25-24
SCALE	AS NOTED
DRAWN	BTC
CHECKED	KHR
JOB	0231-23
SHEET	

A-1.0

REVISIONS	BY
1. HSE	
2. SUBMITTAL	
3. CHECK	
4. PLAN CHECK	
5. SUBMITTAL	
6. CHECK	
7. CONNECTIONS	
8. KUR	

1024 ISABELLA AVENUE
CORONADO, CA 92118
(619) 522-9504

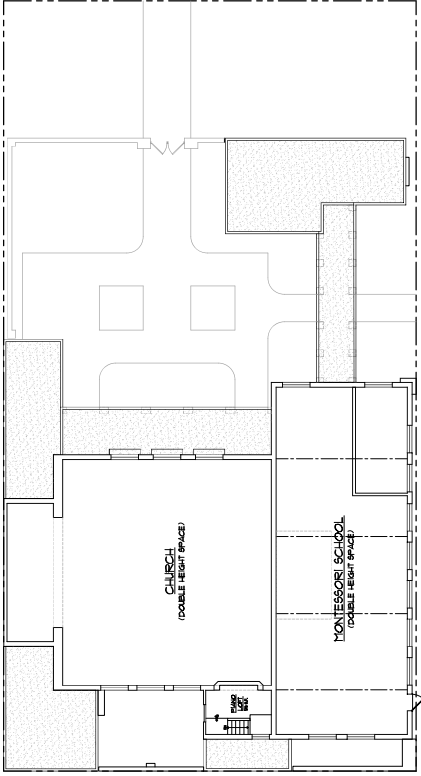
KEVIN RUEGE
ARCHITECT INC.
ESTABLISHED 1986



MONTROSSORI SCHOOL
SPECIAL USE PERMIT
1123 8TH STREET
CORONADO, CA 92118

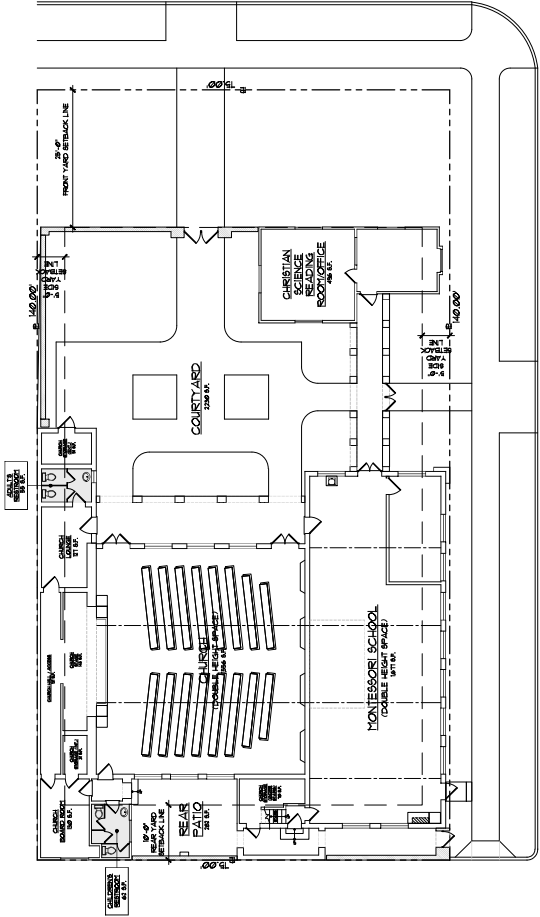
DATE	02-14-20
SCALE	AS SHOWN
DRAWN	BYC
CHECKED	KAR
JOB	020-20
SHEET	A-2

Attachment 2



EXISTING SECOND FLOOR PLAN

SCALE: 3/32" = 1'-0"



EXISTING FIRST FLOOR PLAN

SCALE: 3/32" = 1'-0"